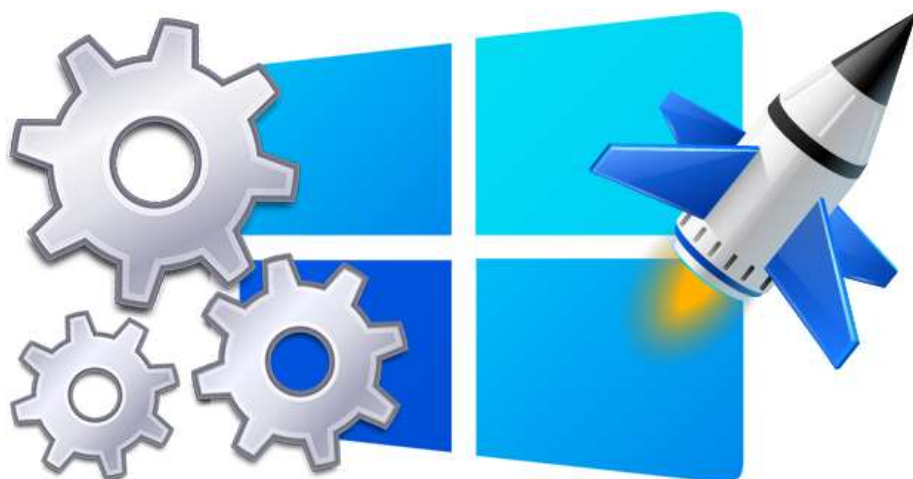


Easy Service Optimizer v1.2

[Sordum Team](#) | [April 17, 2017](#) | [137 Comments](#)



All Windows versions load many services at startup. Most of them (not all) are essential to the core system features. By disabling unnecessary services, performance can be improved significantly, especially on computers with low system resources. Here are some of the Windows services that you can safely disable:

- Print Spooler (if you don't use a printer or print-to-PDF)
- Bluetooth Support (if you don't use any Bluetooth devices)
- Remote Registry (this is not usually enabled by default, but if is you can disable it for safety)
- Remote Desktop (3 services, which you can disable if you don't use this)

Easy Service Optimizer makes it easy for the novice to disable unneeded services!

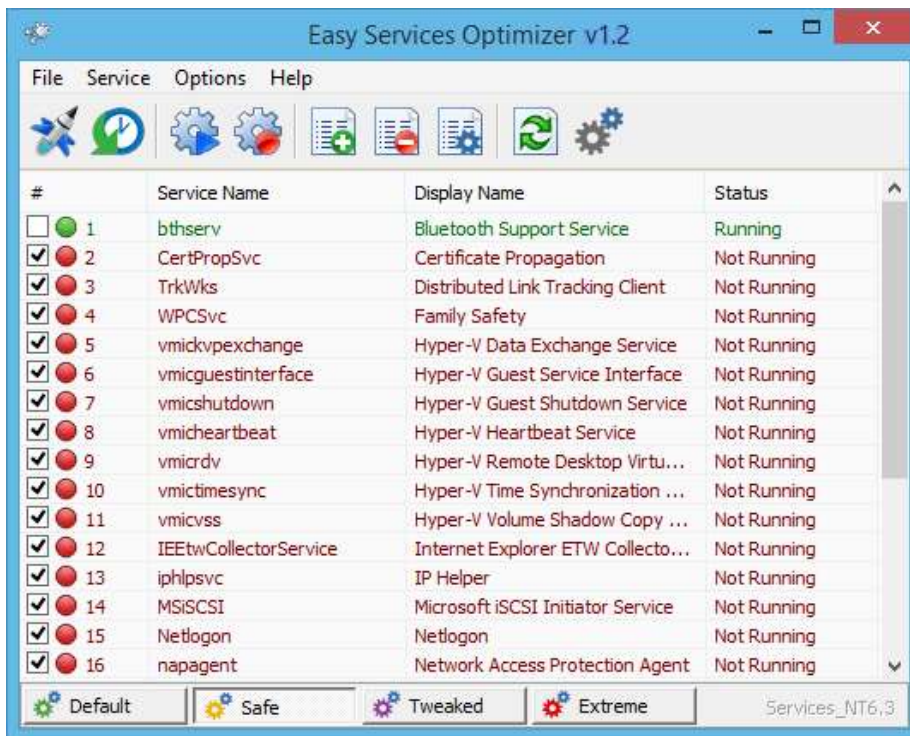
Last Update (Monday , 17 April 2017)

- Windows 10 service List Updated (Windows 10 Creators update 1803 support added)

Easy Service Optimizer (ESO) is portable freeware to optimize services for almost all Windows versions (except for Win 98 and before). It does



not require any technical knowledge and is safe to use because it only changes the startup state of the service, and settings are easy to restore. You can customize a pre-selected list, or create your own.



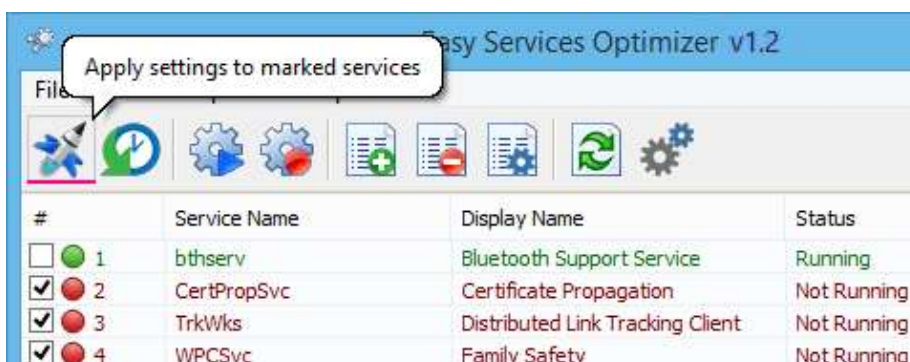
How to Use

After unzipping, run the program. ESO will detect your operating system, and show the appropriate Windows services list. You now have 4 choices :

1. Default (your current list of services)
2. Safe (a no risk selection)
3. Tweaked (an optimized selection)
4. Extreme (a high level of optimization)

After making a selection, click the 'Apply Settings' button.

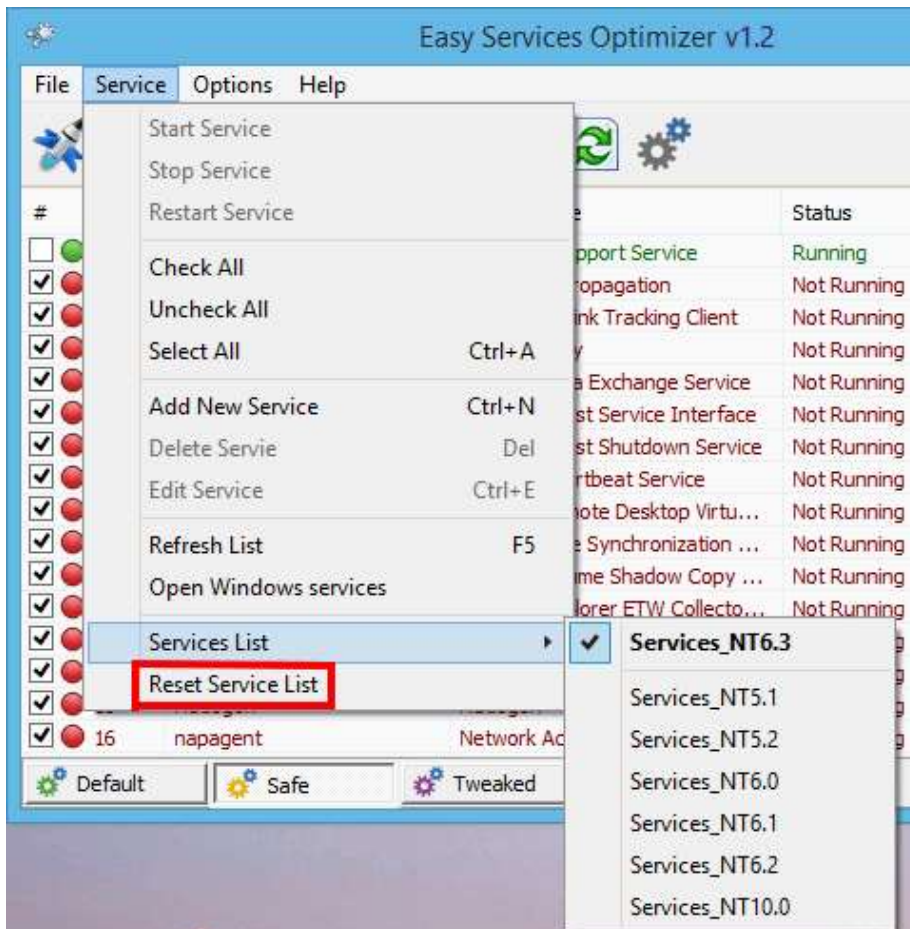
NOTE: These lists include only services capable of optimization (not all of them). Adding a new service and changing its startup type can cause your system to become unstable. Please be careful. We do not accept responsibility for any mistakes..



You can easily change the service lists. You can add, edit, or delete a service. You can start, stop, or restart a service. [Editing the list only changes the service's startup type](#). For example, if you delete the service named 'bthserv' (Bluetooth), it only means you do not want to optimize that service. [ESO will never delete the actual file](#)

Reset services list

If you want to load the default list, just choose 'Services -> Reset Service List'



In the Service menu, you can see the supported operating system services list as well.

Save Current services list

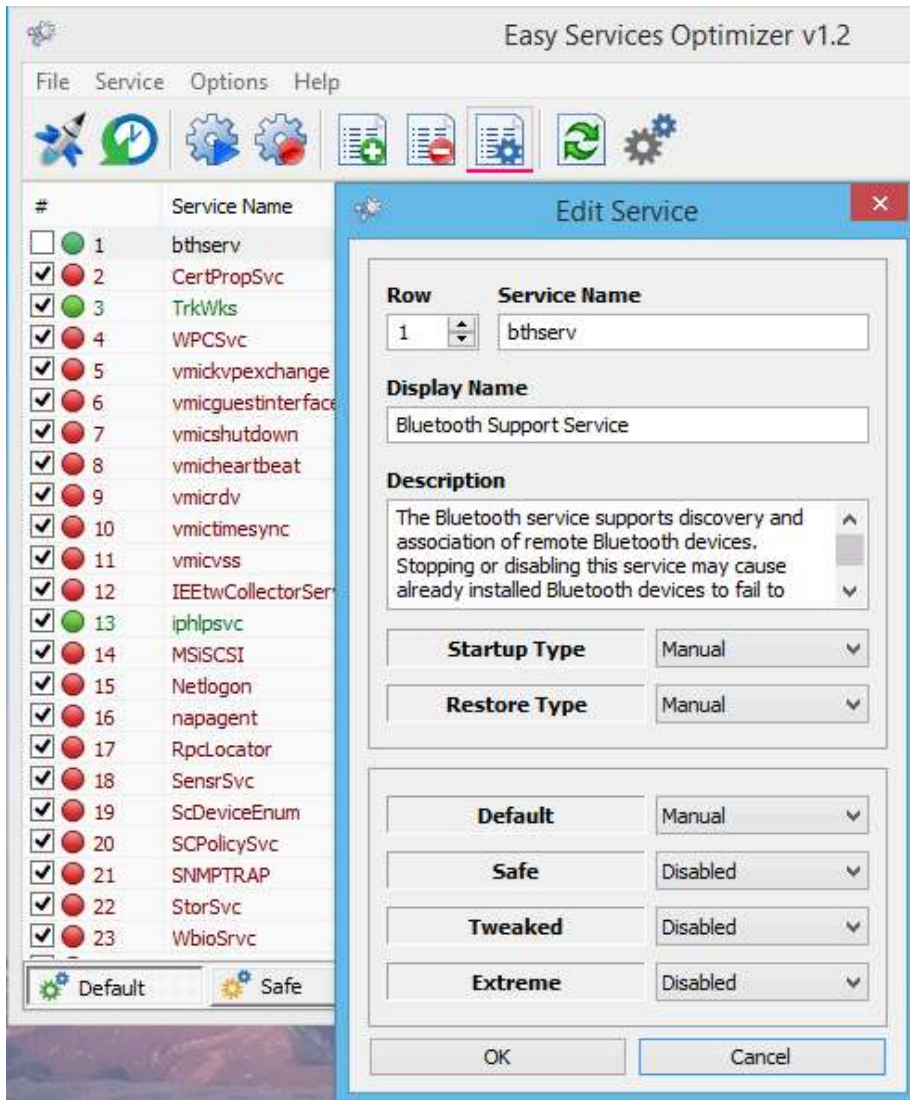
If you want to save the current list, select 'File -> Save As'



On the same menu, you can create a .reg file or open a saved services list, and choose one to edit, or apply.
































Add a new service or edit existing

By clicking the 'Add' button, you can add a new service to the list. You can edit an existing service by using the 'Edit selected service' button. In the Edit Service dialog, you can change the startup type, restore type, or change the state of a pre-set group.



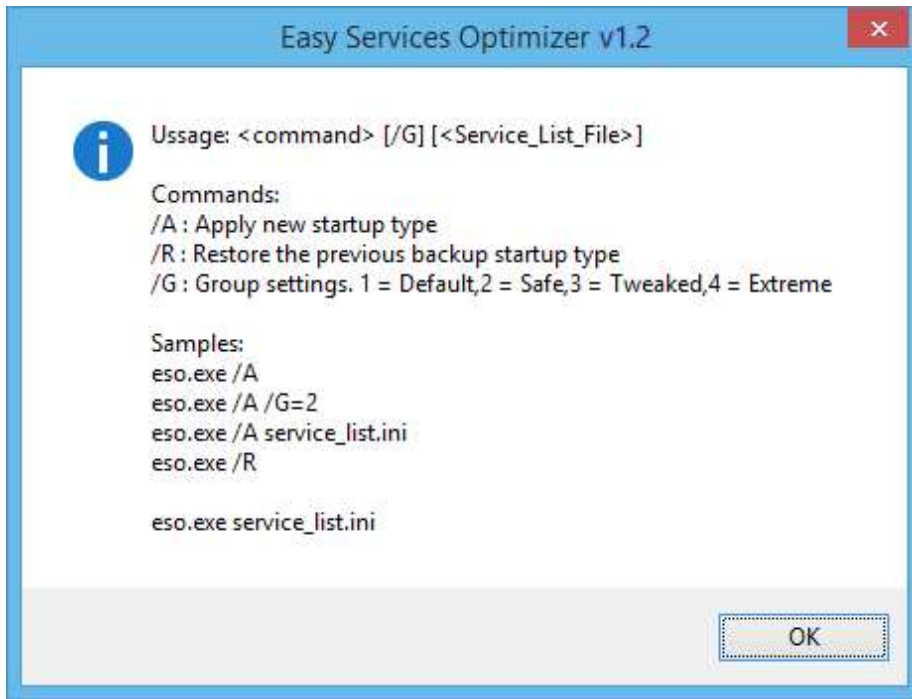
Easy Service Optimizer also offers command line support, as displayed here:

- 📄 Dns jumper - 4.737.699
- 📄 Windows Update Blocker - 2.729.871
- 📄 Firewall App Blocker - 1.211.990
- 📄 Reduce Memory - 1.044.976
- 📄 Easy Context Menu - 713.265
- 📄 Easy Service Optimizer - 524.856
- 📄 Edge Blocker - 468.015 **New**
- 📄 Folder Painter - 404.481
- 📄 Win11 Classic Context ... - 310.865
- 📄 ReIcon - 307.748
- 📄 BlueLife Hosts Editor - 298.801
- 📄 Ratool - 281.880
- 📄 DNS Angel - 247.822
- 📄 RunAsTool - 242.741
- 📄 AskAdmin - 230.828
- 📄 Qemu Simple Boot - 225.820
- 📄 WebCam On-Off - 222.735
- 📄 PowerRun - 203.391
- 📄 Ntfs Drive Protection - 196.678
- 📄 BlueLife KeyFreeze - 187.991
- 📄 Bluetooth Version Finder - 185.188
- 📄 Show Disk Partition Style - 173.339
- 📄 Router Default Passwords - 163.209
- 📄 Fix Print Spooler - 162.539
- 📄 Window TopMost Control - 146.303
- 📄 Reg Converter - 128.087
- 📄 Temp Cleaner - 120.141
- 📄 Simple Run Blocker - 113.120
- 📄 Net Disabler - 110.856
- 📄 Drive Letter Changer - 104.607
- 📄 6to4 Remover - 103.422
- 📄 Simple VHD Manager - 90.731
- 📄 Hide From Uninstall List - 101.114
- 📄 Defender Exclusion Tool - 97.443
- 📄 I Update Time - 78.961

-  Update Time - 78.501
-  Rebuild Shell Icon Cache - 75.835
-  SendTo Menu Editor - 68.267
-  Registry Key Jumper - 67.017
-  Password Generator - 63.609
-  Backup Start Menu Layout - 63.200
-  Dns Lock - 63.121
-  Hibernate Enable or Disable - 62.295
-  Restart Explorer - 61.136
-  Safe Mode Launcher - 54.939
-  Windows Settings Blocker - 52.480
-  Switch Power Scheme - 50.399
-  URL Disabler - 46.396
-  Network Profile Changer - 45.880
-  Sordum Monitor Off - 44.902
-  Simple Firefox Backup - 44.196
-  Copy Public IP - 39.650
-  Classic Shut Down - 37.178
-  Reset Data Usage - 36.597
-  Desktop.ini Editor - 36.440
-  Show Desktop Icons - 35.563
-  Bpuzzle - 32.557
-  VHD For Context Menu - 28.042
-  Find Prime Numbers - 25.412
-  Streams Remover - 24.672
-  Mouse Settings Changer - 23.865
-  Send Windows Key - 22.091
-  No Mouse Wheel Zoom - 15.923
-  Store Apps Tool - 9.159
-  Skip UAC Prompt - 8.825 **New**
-  Wi-Fi Filter Tool - 7.066

Recent Comments

- Robert Childer ... | Windows Updat ...
- Sordum Team | Windows Update Block ...
- Sordum Team | Skip UAC Prompt v1.2
- Fatih | Windows Update Blocker v1. ...
- Tony4219 | Skip UAC Prompt v1.2



- Sordum Team | Ratool v1.4 (Removab ...)
- flavio | Ratool v1.4 (Removable Ac ...)
- Sordum Team | Hibernate Enable or ...
- zhouyuntian | Hibernate Enable or ...
- The Fanihi Man | Windows Update Bl ...
- Sordum Team | PowerRun v1.6 (Run w ...)
- GBR | PowerRun v1.6 (Run with high ...)
- Desp Alk | Windows Update Blocker ...
- beauty | Dns Jumper v2.3
- Sordum Team | Skip UAC Prompt v1.2

Web Tools

- Hash Tool
- Random Password Generator
- Convert Case
- Base64 Decoder/Encoder
- HTML Entity Decoder/Encoder
- URL Decoder/Encoder
- Data Size Converter

Show My IP Address

Google Translate

80 User online

62 queries in 0.054 seconds.

Credit: For the Windows services optimizations , we used (in part) [Black Viper's](#) tweaks from his site.

Supported operating systems: Windows 11 , Windows 10 , Windows 8.1 , Windows 8 , Windows 7 , Windows Vista, Windows Xp – (x86 & x64)

Supported languages: English , Turkish , German , Swedish , Japanese , Vietnamese , French , Portuguese (Brazilian) , Spanish , Hungarian , Russian , Italian , Polish , Chinese Simplified , Chinese Traditional , Slovenian , Estonian , Indonesian , Greek, Korean , Dutch , Ukrainian , Finnish , Portuguese-PT , Thai , Arabic , Bulgarian , Hebrew , Azerbaijani , Romanian



File: eso.exe

MD5: c2b20dc5880f9852ee15a13362f01204

SHA1: 846cc6c90cfee1250ee422b03066c8867e6235ab

Download

Related Posts



SENDTO MENU EDITOR V1.3

51 Comments | May 3, 2023



POWERRUN V1.6 (RUN WITH HIGHEST PRIVILEGES)



ROUTER DEFAULT PASSWORD V1.1

13 Comments | Aug 7, 2019

139 Comments | Feb 4, 2022



DEFENDER CONTROL V2.1

648 Comments |
Sep 13, 2021

137 COMMENTS



Sordum Team | February 27, 2024

Hi, The services marked in the list will be processed.

« Previous 1 ... 7 8 9

Add a Comment

Your email address will not be published. Required fields are marked *

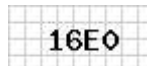
Comment *

Name: *

Email Address: *

Website:

Security Code: *



ADD COMMENT

Our Freewares



Simple Run Bl...



Show Disk Par...



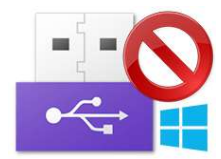
Classic Shut D...



Hibernate Ena...



Simple VHD M...



Ratool v1.4 (R...



COPYRIGHT © 2006-2024 [SORDUM.ORG](https://www.sordum.org). ALL RIGHTS RESERVED.

[PRIVACY POLICY](#)

[CONTACT US](#)

[EULA](#)

[DONATE](#)

[DOWNLOAD](#)