

Firewall App Blocker (Fab) v1.9

[Sordum Team](#) | [September 28, 2022](#) | [427 Comments](#)



In Windows, you can use Windows Firewall to block or unblock certain applications, but it doesn't offer an easy-to-use interface for its advanced features. If you want to block an application from accessing the internet, you must go through the following steps:

1. Click the Windows Start Menu and open Control Panel
2. Select System & Security
3. Then in the Firewall section, you select "Allow a program through the Windows Firewall"
4. If the program you wish to block or unblock isn't listed, you must click "Allow another program" to add it. Choose the application in the list and select "Add". Else you must then browse the hard drive to find it, and so on. This seems complicated for the average user.

Firewall App Blocker makes the process very easy! Simply drag and drop the application you wish to block into the FAB window, or browse the hard disk to find it. That's it!

What is new: (Wednesday, 28 September 2022)

[FIXED] – If you change GUI language, Enable WhiteList box disappears

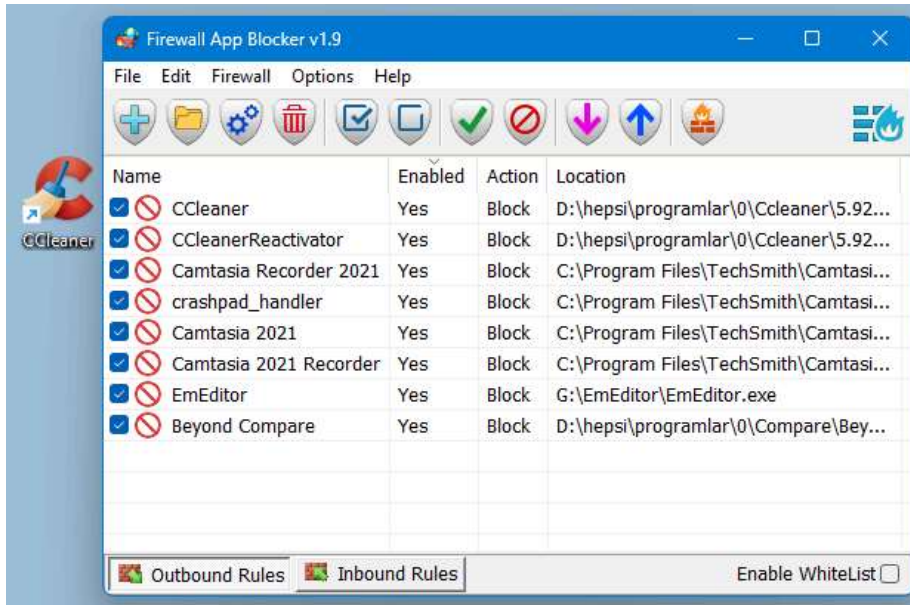
[FIXED] – A minor bug in command prompt

[FIXED] – Entries can't be sorted that the most recently added ones are

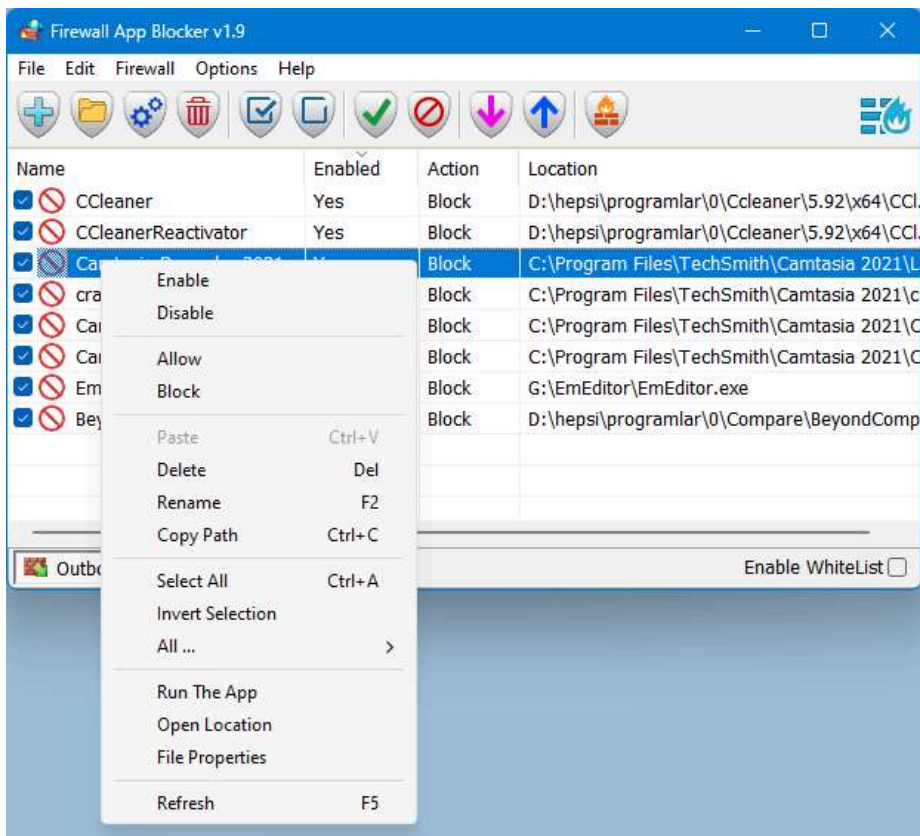


at the top

[ADDED] – Partial language support for “File -> Netsh Commands”



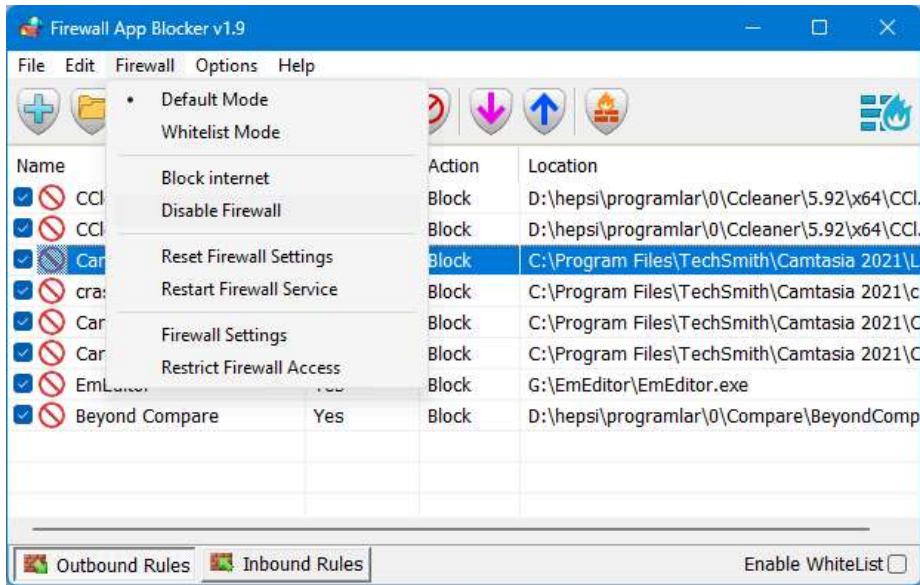
If you want to allow it access again, just right click on it and choose “Allow” or select it and press the Delete button also you can use Allow button.



In this version there are some extra features on the Firewall menu, including “White List Mode”, Block internet , Restrict Firewall Options etc.

What is WhiteList Mode: it will block everything except on the white listed items, to activate it tick the “Enable WhiteList” box on the right bottom corner , The whitelist mode denies access to all network

interfaces, After enabling WhiteList Mode Drag and drop an Application/Applications on the “Firewall Application Blocker” interface to Allow it/them , It was the most wanted feature



Following command can be used to allow **WhatsApp** in whitelist. You can use this command with task scheduler or in a script.

```
fab_x64.exe /a /allow /in /out
```

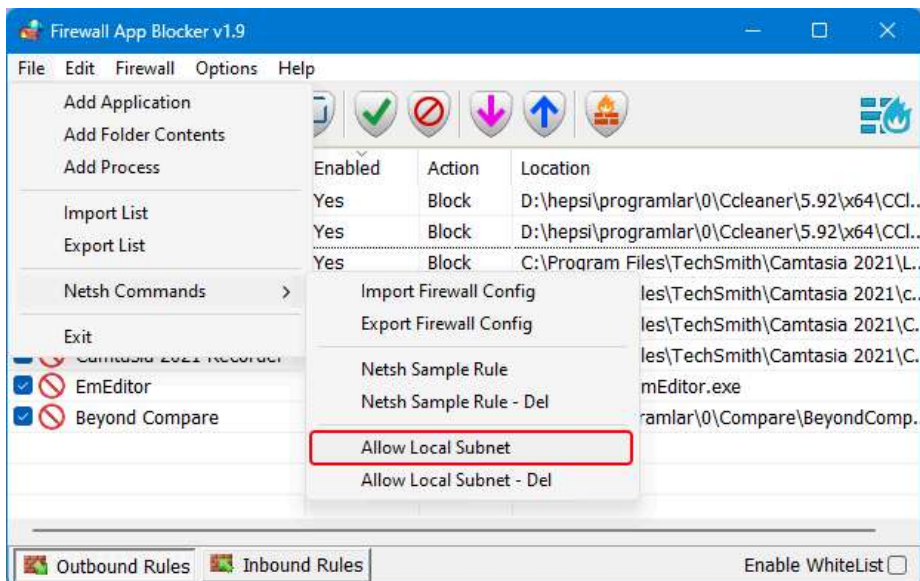
```
%ProgramFiles%\WindowsApps\*WhatsAppDesktop*
```

If you want to delete old whatsapp , you need to run below command , before the above add command

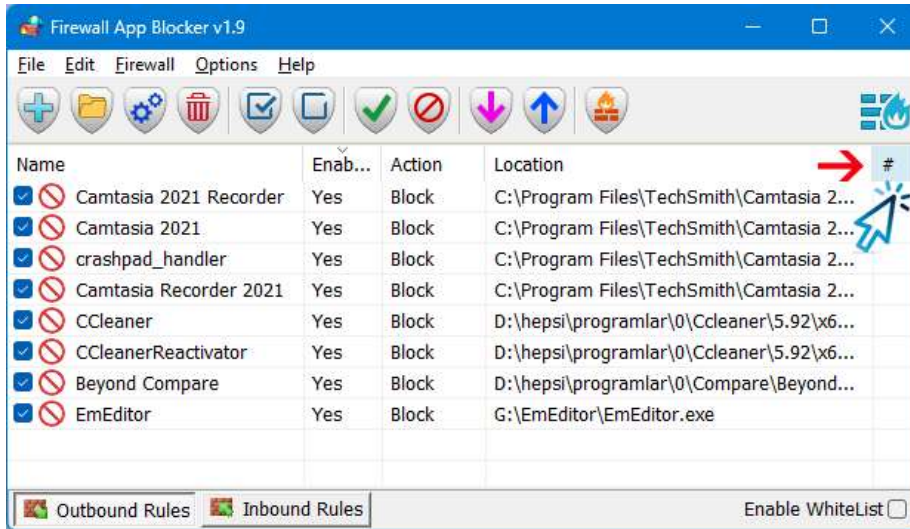
```
fab_x64.exe /d /in /out
```

```
%ProgramFiles%\WindowsApps\*WhatsAppDesktop?*
```

Note: When you enable the WhiteList mode, some devices such as a printer on your local network may not work properly, to solve this Problem,you can allow devices on your local network by clicking **File – Netsh Commands – Allow Local Subnet**

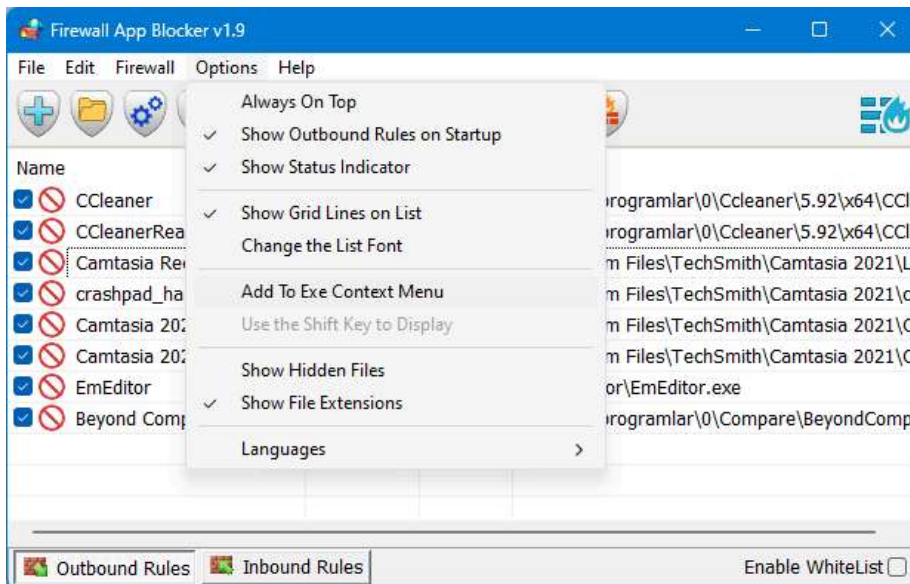


To sort Entries that the most recently added ones are at the top , please click **enabled or action column header** first then “#” column will appear , click on header this column to sort the most recently added entries at the first place.


































How to Block Ms EDGE internet connection Properly: To block Microsoft EDGE properly please use “Disable_EdgeRule.bat” [Here](#) and then use FAB (Firewall Application Blocker) Add Process button (second) to add Microsoft EDGE icons on the FAB interface.

To add an Outbound or Inbound Firewall Rules separately , use One of the Bottom left buttons , shown above are Firewall Application Blocker file and Options menus



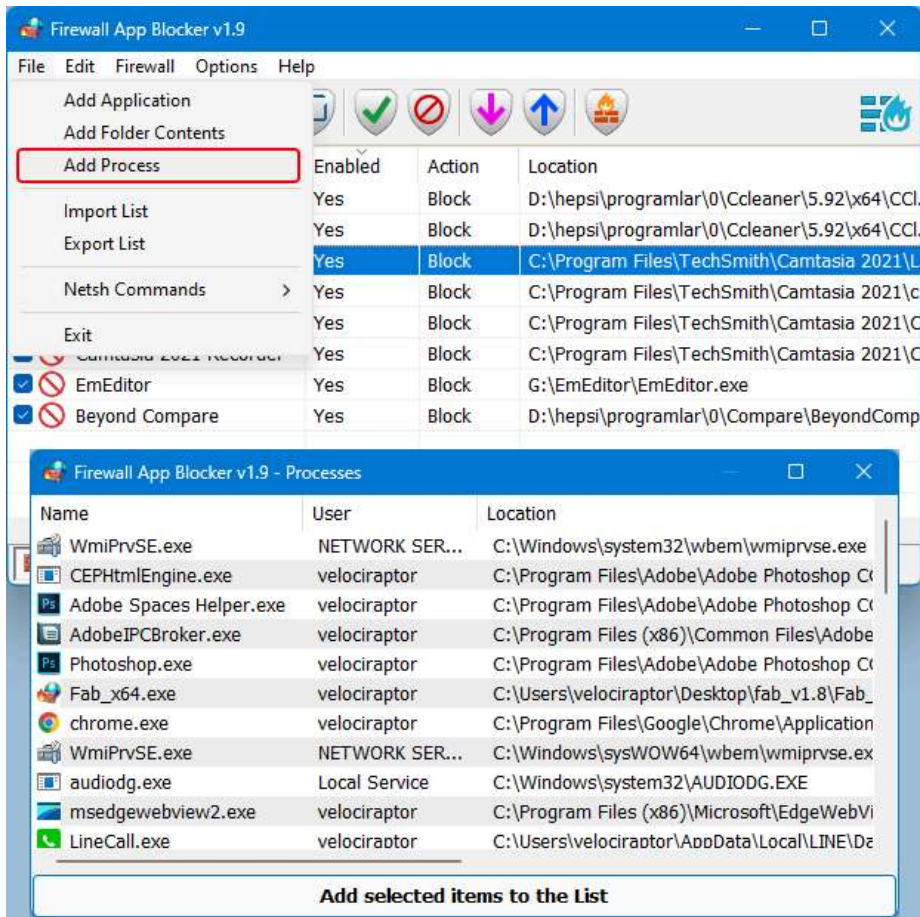
By selecting Options -> Languages -> Translate, you can easily translate FAB into your language. By choosing “Add Process” feature you can Add any process to Outbound or Inbound list. To add more than one process, just hold down the ctrl key and select the Processes

- 📄 Dns jumper - 4.737.699
- 📄 Windows Update Blocker - 2.729.871
- 📄 Firewall App Blocker - 1.211.990
- 📄 Reduce Memory - 1.044.974
- 📄 Easy Context Menu - 713.264
- 📄 Easy Service Optimizer - 524.856
- 📄 Edge Blocker - 468.015 **New**
- 📄 Folder Painter - 404.481
- 📄 Win11 Classic Context ... - 310.865
- 📄 ReIcon - 307.748
- 📄 BlueLife Hosts Editor - 298.801
- 📄 Ratool - 281.880
- 📄 DNS Angel - 247.822
- 📄 RunAsTool - 242.741
- 📄 AskAdmin - 230.828
- 📄 Qemu Simple Boot - 225.820
- 📄 WebCam On-Off - 222.735
- 📄 PowerRun - 203.391
- 📄 Ntfs Drive Protection - 196.678
- 📄 BlueLife KeyFreeze - 187.991
- 📄 Bluetooth Version Finder - 185.188
- 📄 Show Disk Partition Style - 173.339
- 📄 Router Default Passwords - 163.209
- 📄 Fix Print Spooler - 162.539
- 📄 Window TopMost Control - 146.303
- 📄 Reg Converter - 128.087
- 📄 Temp Cleaner - 120.141
- 📄 Simple Run Blocker - 113.120
- 📄 Net Disabler - 110.856
- 📄 Drive Letter Changer - 104.607
- 📄 6to4 Remover - 103.422
- 📄 Simple VHD Manager - 90.731
- 📄 Hide From Uninstall List - 101.114
- 📄 Defender Exclusion Tool - 97.443
- 📄 I Update Time - 78.961

-  Update Time - 78.501
-  Rebuild Shell Icon Cache - 75.835
-  SendTo Menu Editor - 68.267
-  Registry Key Jumper - 67.017
-  Password Generator - 63.609
-  Backup Start Menu Layout - 63.200
-  Dns Lock - 63.121
-  Hibernate Enable or Disable - 62.295
-  Restart Explorer - 61.136
-  Safe Mode Launcher - 54.939
-  Windows Settings Blocker - 52.480
-  Switch Power Scheme - 50.399
-  URL Disabler - 46.396
-  Network Profile Changer - 45.880
-  Sordum Monitor Off - 44.902
-  Simple Firefox Backup - 44.196
-  Copy Public IP - 39.650
-  Classic Shut Down - 37.178
-  Reset Data Usage - 36.597
-  Desktop.ini Editor - 36.440
-  Show Desktop Icons - 35.563
-  Bpuzzle - 32.557
-  VHD For Context Menu - 28.042
-  Find Prime Numbers - 25.412
-  Streams Remover - 24.672
-  Mouse Settings Changer - 23.865
-  Send Windows Key - 22.091
-  No Mouse Wheel Zoom - 15.923
-  Store Apps Tool - 9.159
-  Skip UAC Prompt - 8.825 **New**
-  Wi-Fi Filter Tool - 7.066

Recent Comments

- Robert Childer ... | Windows Updat ...
- Sordum Team | Windows Update Block ...
- Sordum Team | Skip UAC Prompt v1.2
- Fatih | Windows Update Blocker v1. ...
- Tony4219 | Skip UAC Prompt v1.2



- Sordum Team | Ratool v1.4 (Removab ...
- flavio | Ratool v1.4 (Removable Ac ...
- Sordum Team | Hibernate Enable or ...
- zhouyuntian | Hibernate Enable or ...
- The Fanihi Man | Windows Update BI ...
- Sordum Team | PowerRun v1.6 (Run w ...
- GBR | PowerRun v1.6 (Run with high ...
- Desp Alk | Windows Update Blocker ...
- beauty | Dns Jumper v2.3
- Sordum Team | Skip UAC Prompt v1.2

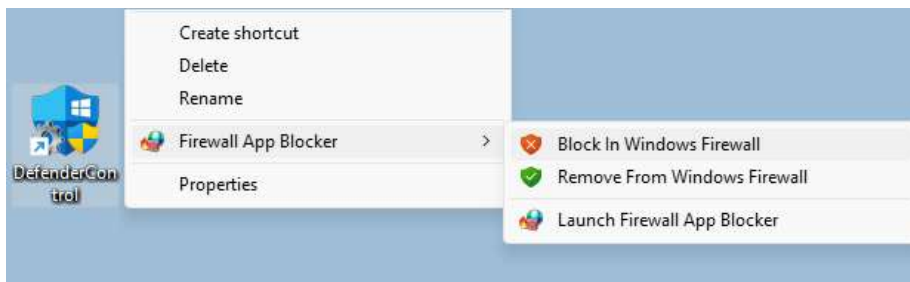
Web Tools

- Hash Tool
- Random Password Generator
- Convert Case
- Base64 Decoder/Encoder
- HTML Entity Decoder/Encoder
- URL Decoder/Encoder
- Data Size Converter
- Show My IP Address
- Google Translate

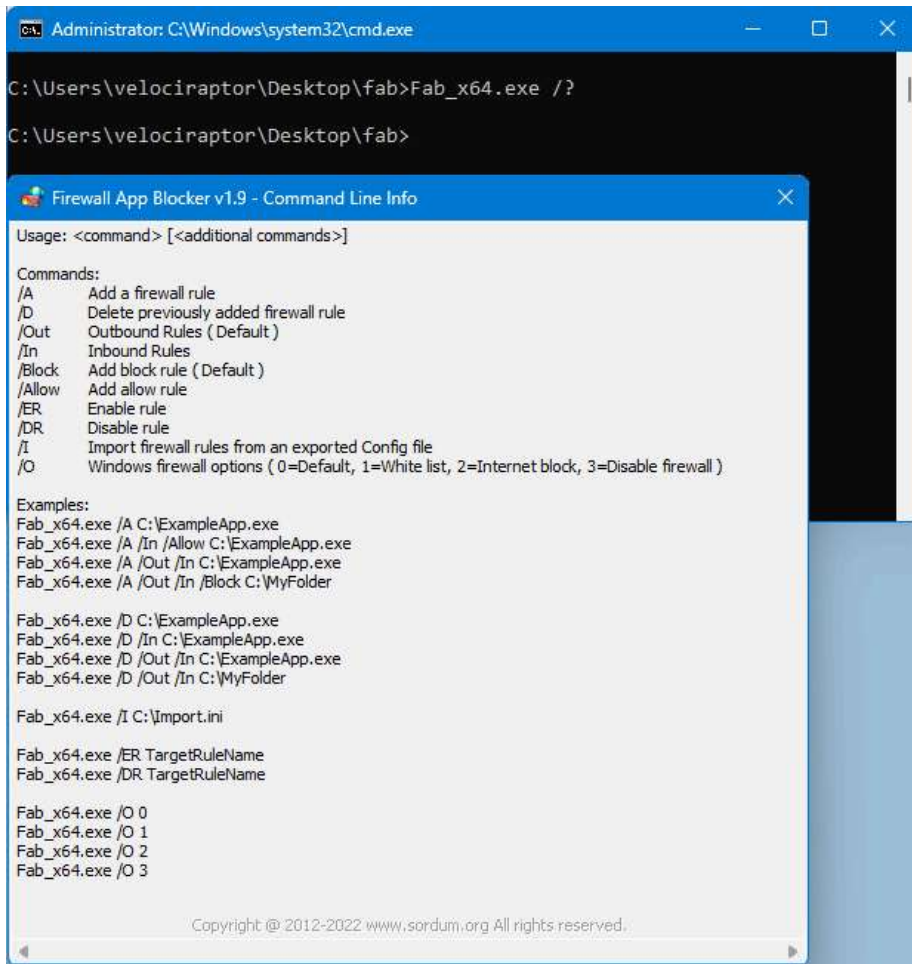
86 User online

63 queries in 0.065 seconds.

When “Add to exe context menu” feature enabled from Options menu, you will be able to block/unblock a specific app right from Windows Explorer right-click context menu, this will allow you to right click any .exe file and easily add it to the Windows Firewall. This context menu entry can be altered to only display when you press the Shift key. To do this, select “Use Shift Key to Display”



FAB also offers CMD support. To use this, just make sure to use the correct parameter, as shown below:



```

Administrator: C:\Windows\system32\cmd.exe

C:\Users\velociraptor\Desktop\fab>Fab_x64.exe /?

C:\Users\velociraptor\Desktop\fab>

Firewall App Blocker v1.9 - Command Line Info

Usage: <command> [<additional commands>]

Commands:
/A      Add a firewall rule
/D      Delete previously added firewall rule
/Out    Outbound Rules ( Default )
/In     Inbound Rules
/Block  Add block rule ( Default )
/Allow  Add allow rule
/ER     Enable rule
/DR     Disable rule
/I      Import firewall rules from an exported Config file
/O      Windows firewall options ( 0=Default, 1=White list, 2=Internet block, 3=Disable firewall )

Examples:
Fab_x64.exe /A C:\ExampleApp.exe
Fab_x64.exe /A /In /Allow C:\ExampleApp.exe
Fab_x64.exe /A /Out /In C:\ExampleApp.exe
Fab_x64.exe /A /Out /In /Block C:\MyFolder

Fab_x64.exe /D C:\ExampleApp.exe
Fab_x64.exe /D /In C:\ExampleApp.exe
Fab_x64.exe /D /Out /In C:\ExampleApp.exe
Fab_x64.exe /D /Out /In C:\MyFolder

Fab_x64.exe /I C:\Import.ini

Fab_x64.exe /ER TargetRuleName
Fab_x64.exe /DR TargetRuleName

Fab_x64.exe /O 0
Fab_x64.exe /O 1
Fab_x64.exe /O 2
Fab_x64.exe /O 3

Copyright © 2012-2022 www.sordum.org All rights reserved.

```

Note: Firewall App Blocker doesn't change Windows Firewall default Rules. If you use 3rd party security software or a 3rd party firewall (e.g. Avast), they can disable your Windows Firewall. If you do not want Ms Edge and similar microsoft programs to access the Internet in White List mode, you can manually disable their rules in the advanced windows firewall settings **Firewall App Blocker runs properly only if your Windows Firewall is enabled.**

Supported Operating Systems: Windows 11 , Windows 10 , Windows 8.1 , Windows 8 , Windows 7 , Windows Vista – (both x86 and x64)

Supported languages: English , Turkish , German , French , Brazilian portuguese , Greek , Italian , Polish , Persian , Russian , Dutch , Spanish , Korean , Simplified and Traditional Chinese , Indonesian , Japanese , Finnish , Hungarian , Ukrainian , Slovenian , Arabic , Vietnamese , Bosnian , Czech , Hebrew , Thai , Portuguese , Romanian , Swedish



File: [Fab_x64.exe](#) | [Virustotal](#)

MD5: 970b29465d8118bf8038a42c92bf90df

SHA1: b22d955115f4142198a288550d3592927b1b9460

File: [Fab.exe](#) | [Virustotal](#)

MD5: 5da9c7ba1250ae64f2ae50f1244dc5e9

SHA1: d11b74adf1ad35dd6df0f57004e287859f021a29

Download

Related Posts



REG CONVERTER V1.2

82 Comments | Jan 22, 2018



DNS ANGEL V1.7

159 Comments | Jan 23, 2023



NTFS DRIVE PROTECTION V1.5

89 Comments | Mar 10, 2017



STORE APPS TOOL V1.1

18 Comments | Sep 1, 2023

427 COMMENTS



Sordum Team | April 21, 2024

Hi , We have noted down your request . You can use **netsh.exe** to backup and restore all firewall rules.

To back up firewall rules;

```
netsh.exe advfirewall export C:\fw-rules.wfw
```

To restore firewall rules;

```
netsh.exe advfirewall import C:\fw-rules.wfw
```

If there is a space in the file location, enclose the file location in quotation marks.



v.a.p. | April 21, 2024

Good afternoon Sordum Team

A question please, there is an option on the command line to import the FAB program rules, but what is the option to EXPORT the FAB program rules, or the

command line option to export the FIREWALL rules?
THANK YOU.

« Previous 1 ... 24 25 26

Add a Comment

Your email address will not be published. Required fields are marked *

Comment *

Name: *

Email Address: *

Website:

Security Code: *

4	2	6	7
---	---	---	---

ADD COMMENT

Our Freewares



Reset Data Us...



Net Disabler v...



No Mouse Wh...



Mouse Setting...



Dns Lock v1.5



Router Defaul...



COPYRIGHT © 2006-2024 [SORDUM.ORG](https://www.sordum.org). ALL RIGHTS RESERVED.

[PRIVACY POLICY](#)

[CONTACT US](#)

[EULA](#)

[DONATE](#)

[DOWNLOAD](#)
